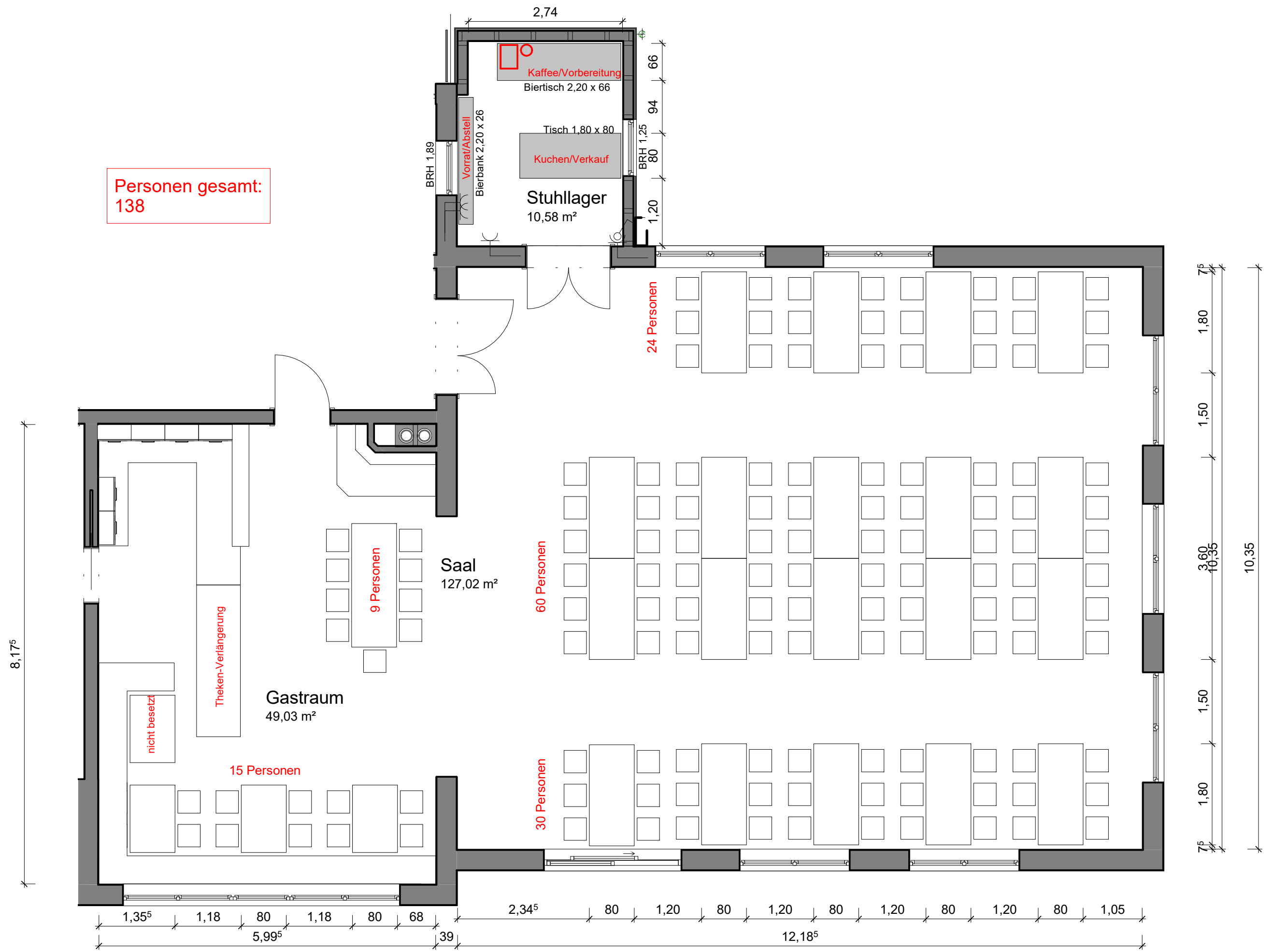


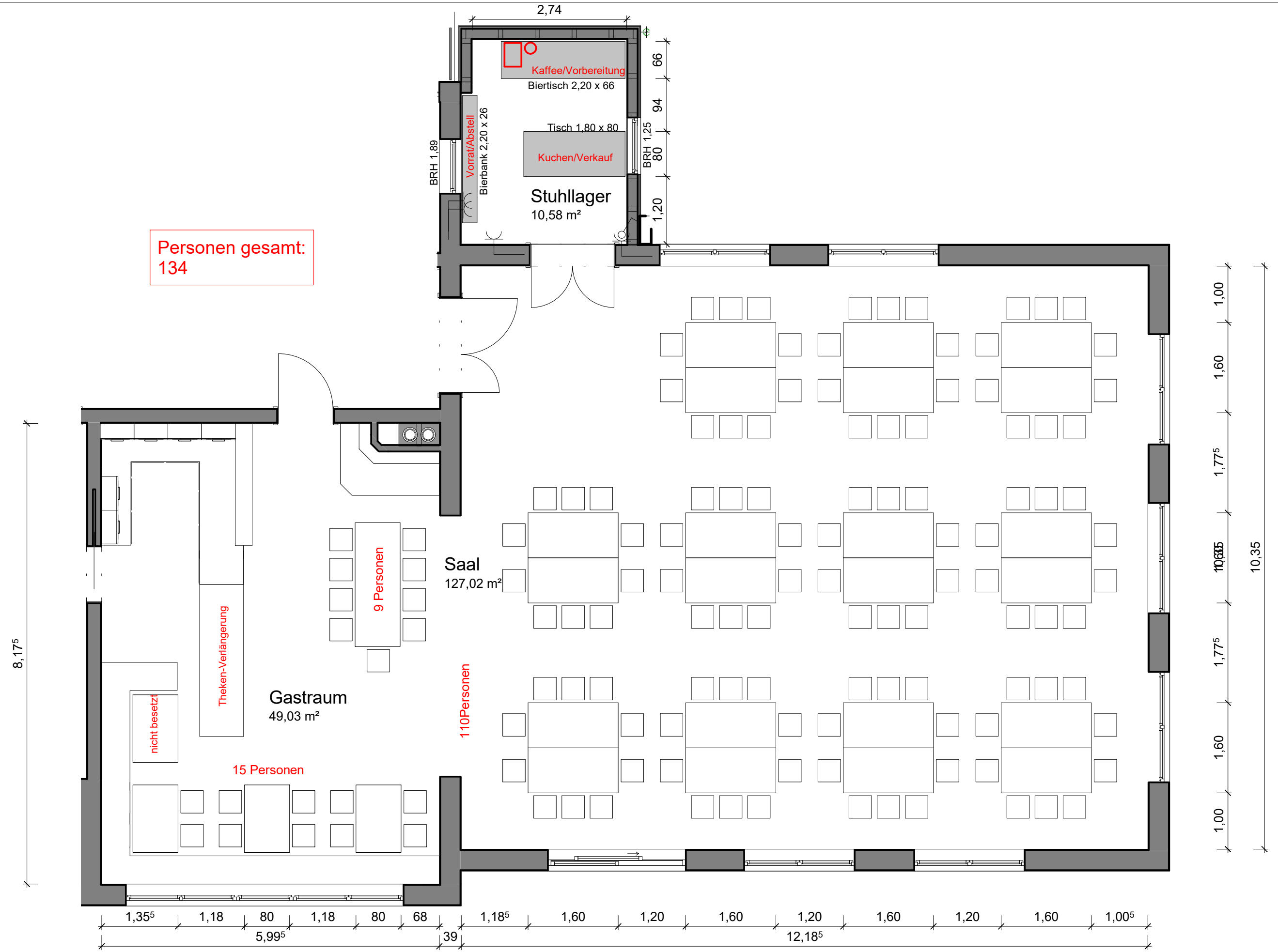
Personen gesamt:
138



8,17⁵

1,35⁵ 1,18 80 1,18 80 68 2,34⁵ 80 1,20 80 1,20 80 1,20 80 1,20 80 1,05
5,99⁵ 39 12,18⁵

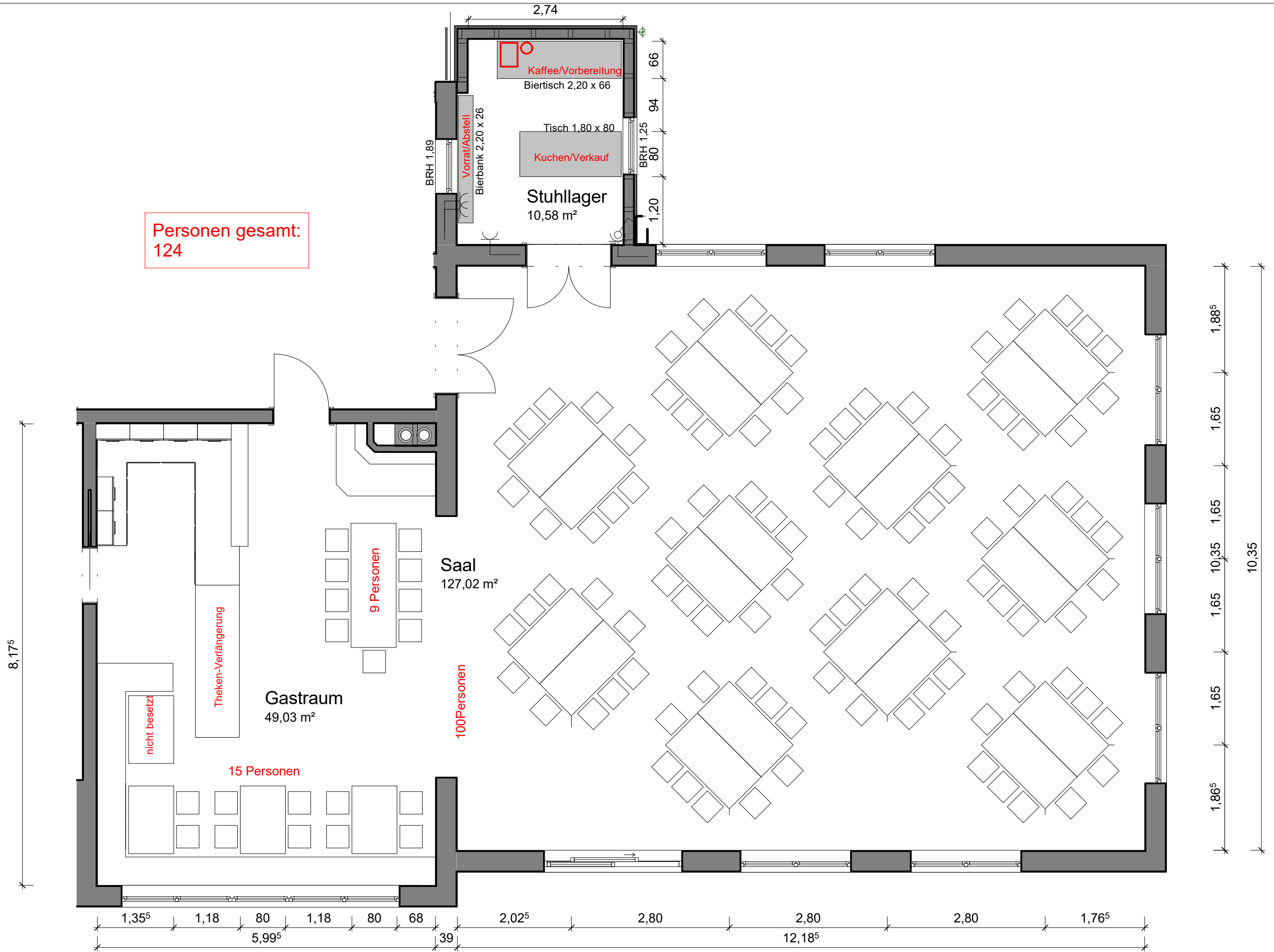
7⁵ 1,80 1,50 3,60 10,35 7⁵ 1,50 1,80 10,35



3010-14 130601-1

Dorfhhaus Neubronn
 Kappeläcker 1
 73453 Abtsgmünd-Neubronn

Bestuhlung Saal Var. 2
 Plandatum: 19. April 2017
 Druckdatum: 19.04.2017 20:44:53

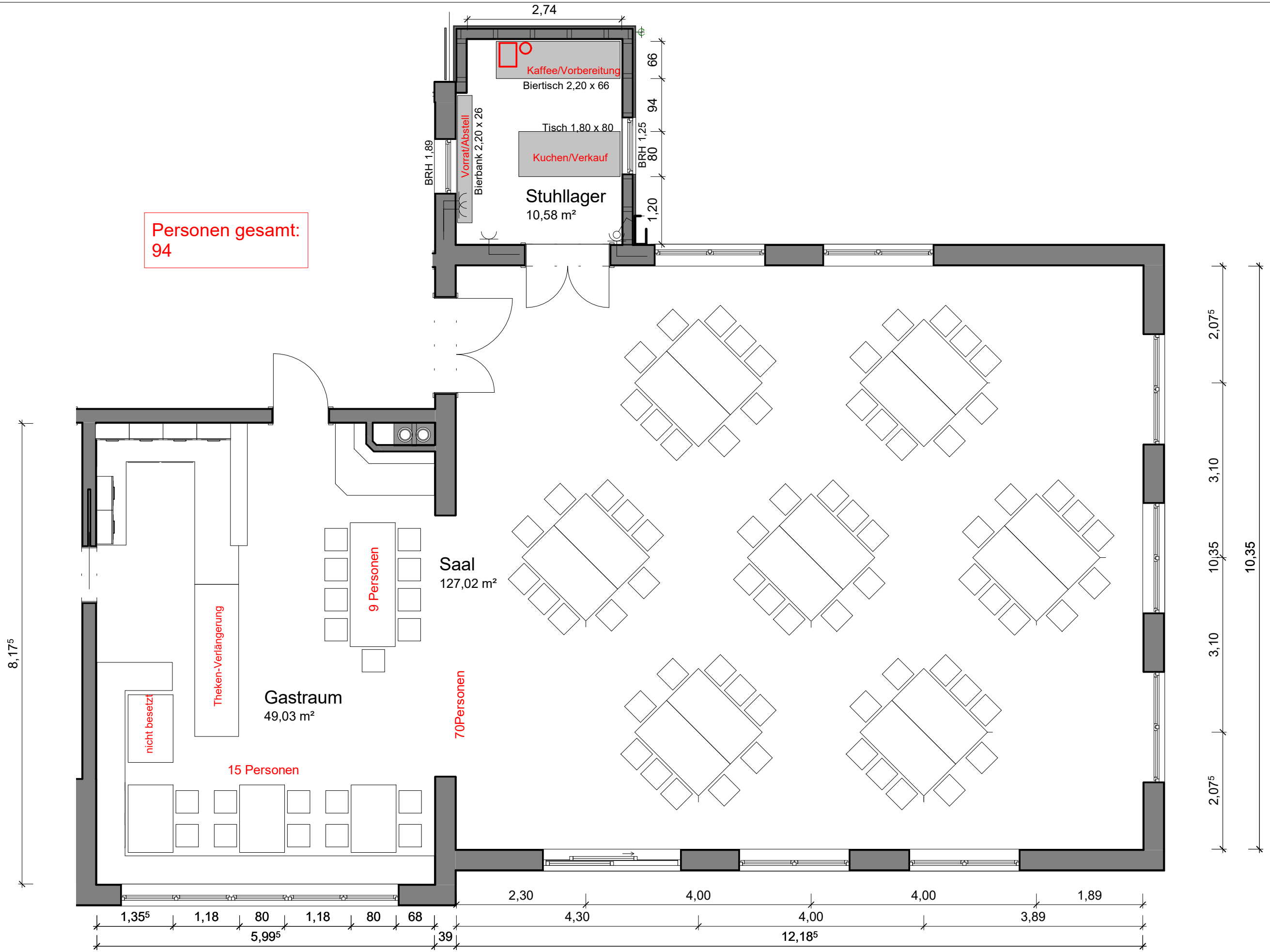


M 1 : 65

3010-15 130601-1

Dorfhhaus Neubronn
 Kappeläcker 1
 73453 Abtsgmünd-Neubronn

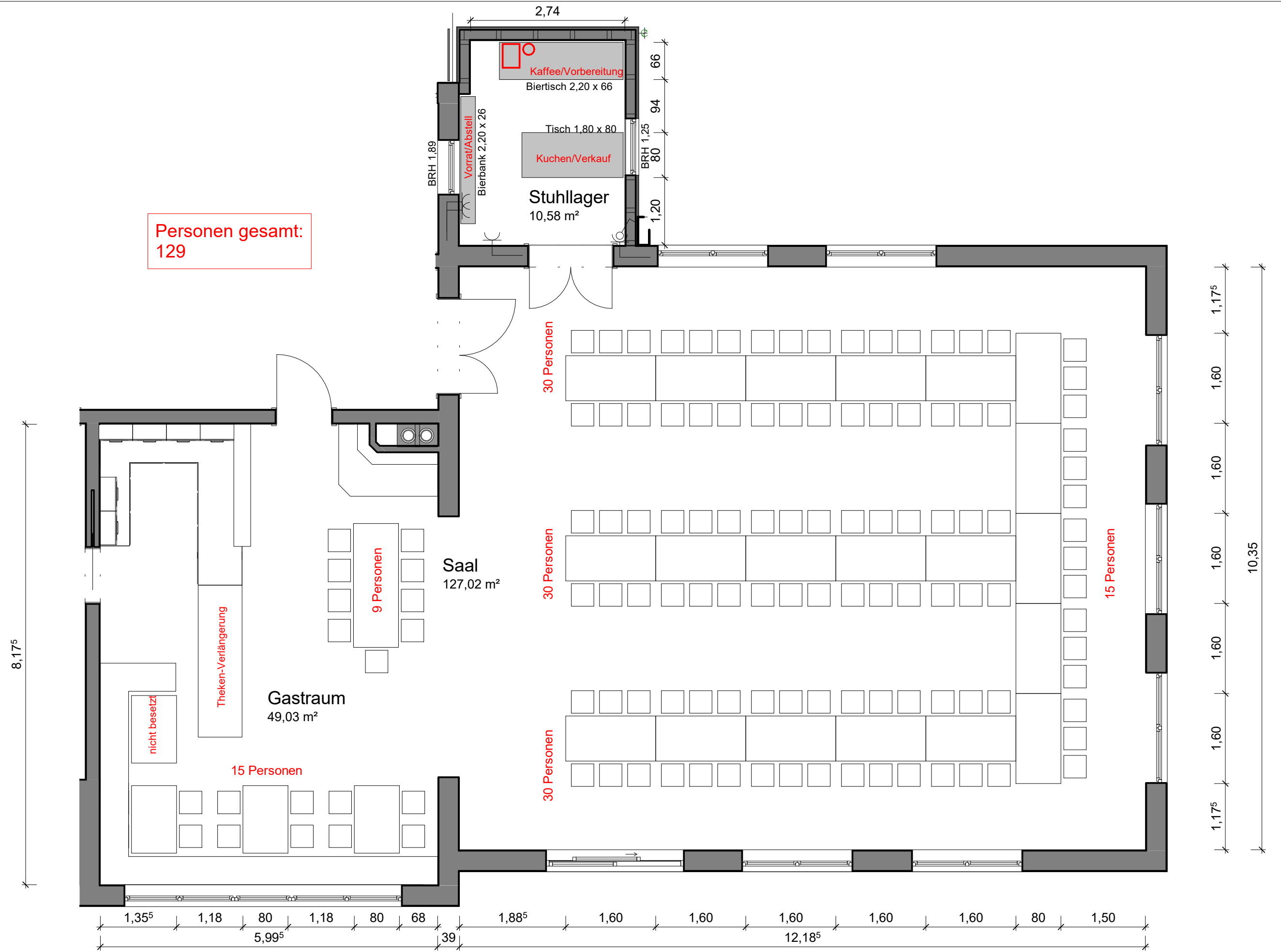
Bestuhlung Saal Var. 3
 Plandatum: 19. April 2017
 Druckdatum: 19.04.2017 20:44:55



3010-16 130601-1

Dorfhhaus Neubronn
Kappeläcker 1
73453 Abtsgmünd-Neubronn

Bestuhlung Saal Var. 4
Plandatum: 19. April 2017
Druckdatum: 19.04.2017 20:44:55

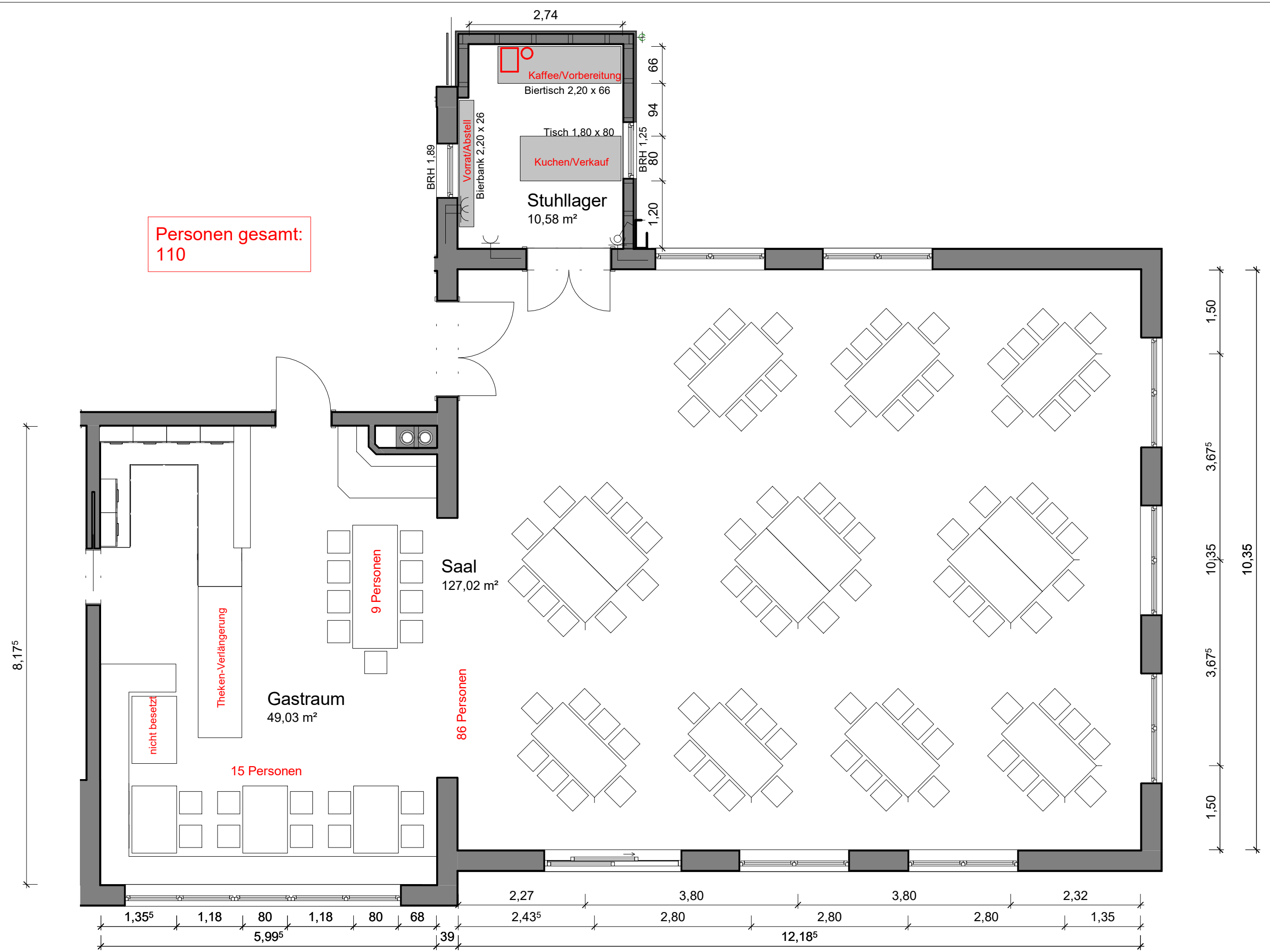


M 1 : 65

3010-17 130601-1

Dorfhaus Neubronn
 Kappeläcker 1
 73453 Abtsgmünd-Neubronn

Bestuhlung Saal Var. 5
 Plandatum: 11. April 2017
 Druckdatum: 19.04.2017 20:44:56

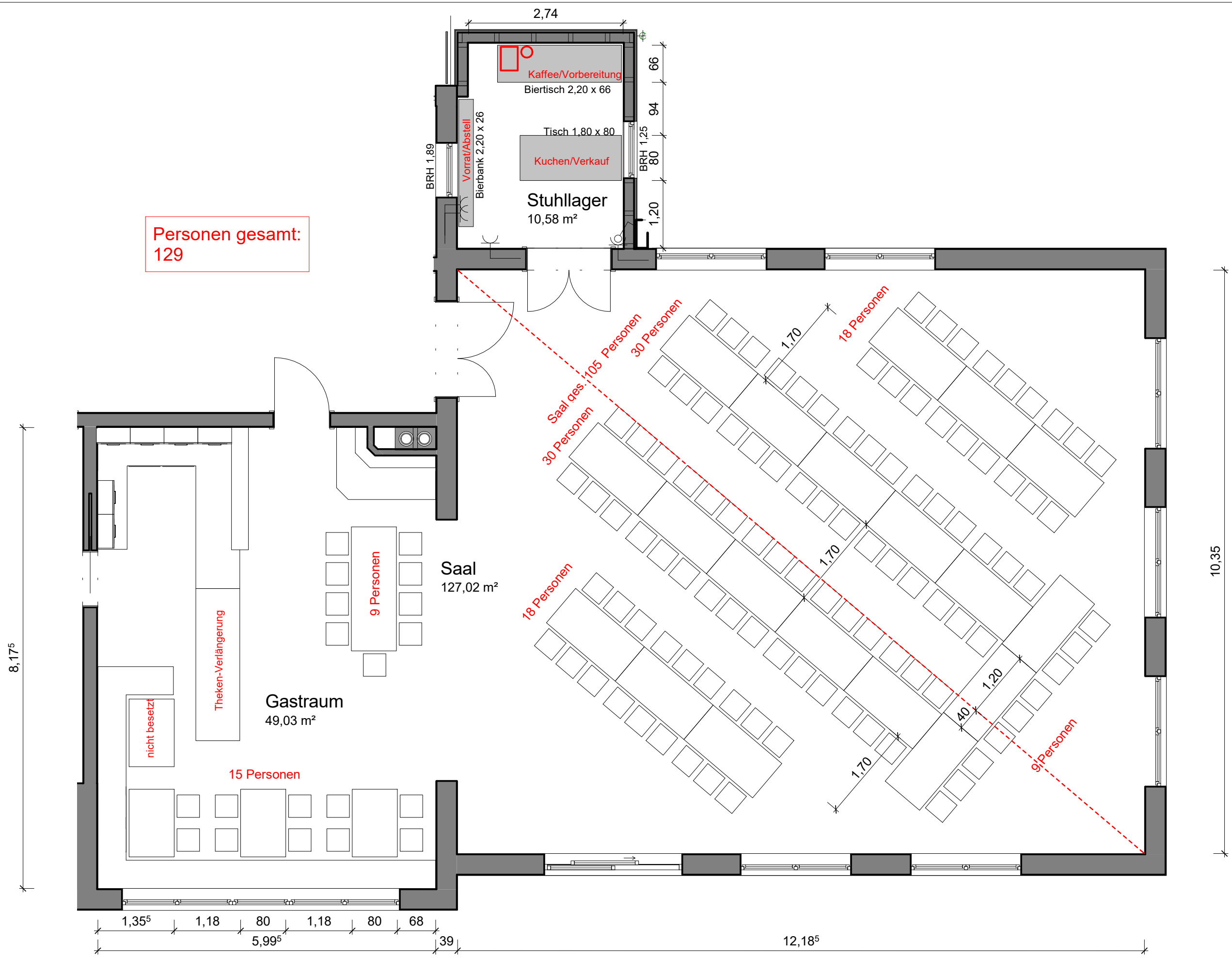


M 1 : 65

3010-18 130601-1

Dorfhhaus Neubronn
 Kappeläcker 1
 73453 Abtsgmünd-Neubronn

Bestuhlung Saal Var. 6
 Plandatum: 19. April 2017
 Druckdatum: 19.04.2017 20:44:56



3010-19 130601-1

Dorfhhaus Neubronn
Kappeläcker 1
73453 Abtsgmünd-Neubronn

Bestuhlung Saal Var. 7
Plandatum: 19. April 2017
Druckdatum: 19.04.2017 20:44:57